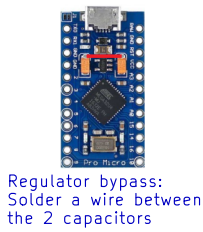
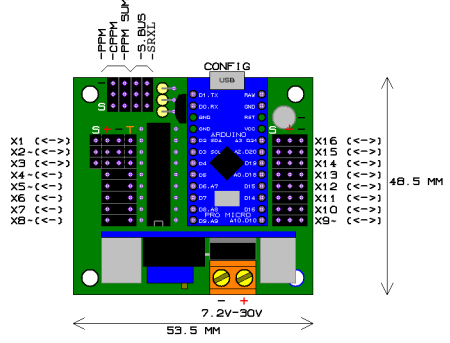
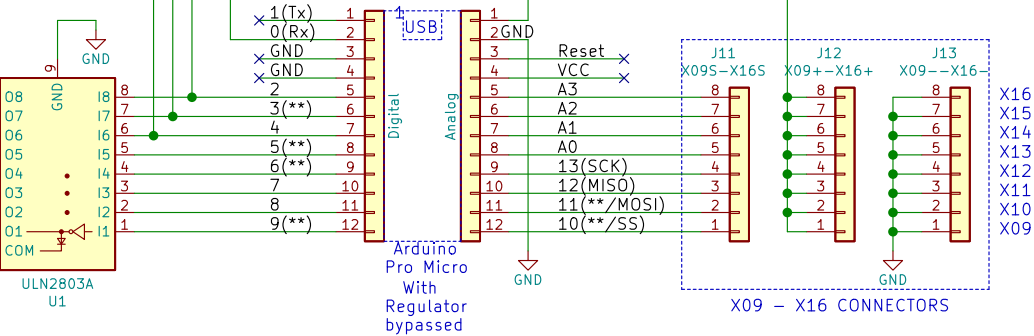
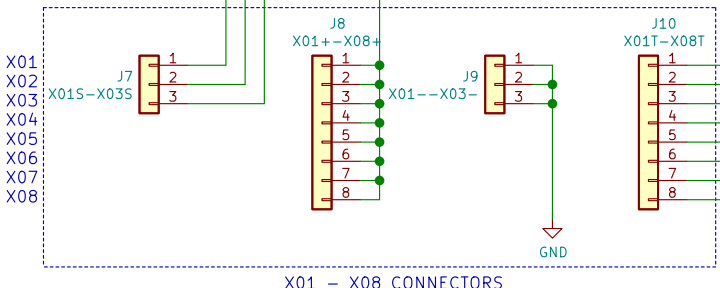
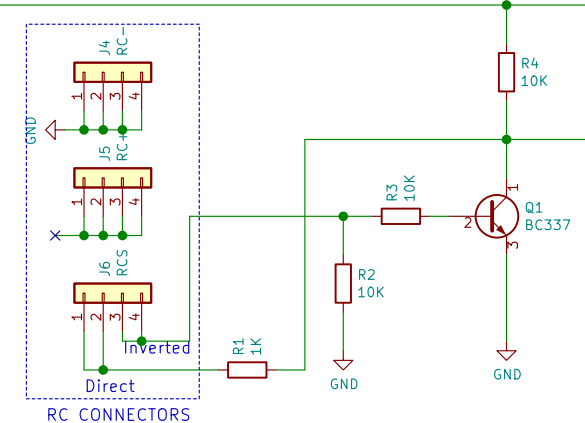
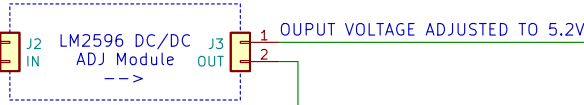
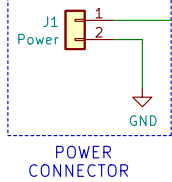


VOLTAGE RANGE
7.2V -> 30V



Regulator bypass:
Solder a wire between
the 2 capacitors

BURC: an Universal RC Box (Directly compatible with OpenAVRc without any BURC coder)
 - Driven by PWM, CPPM, PPM Sum, SBUS or SRXL RC commands (RCUL/X-Any protocol)
 - Read digital inputs (eg: limit switches) } Acts as a PLC with inputs and outputs
 - Drive digital outputs (Leds, relays) } including digital inputs/outputs and servos
 - Drive regular or 360° modified servos (built-in 5V/2A power supply)
RC NAVY More info: <http://p.loussouarn.free.fr/arduino/exemple/BURC/BURC.html>

Sheet: /	
File: BURC_Decoder.sch	
Title: BURC DECODER	
Size: A4	Date: 03/01/2015
KiCad E.D.A. kicad 5.1.5-52549c586ubuntu18.04.1	Rev: V1.0
	Id: 1/1